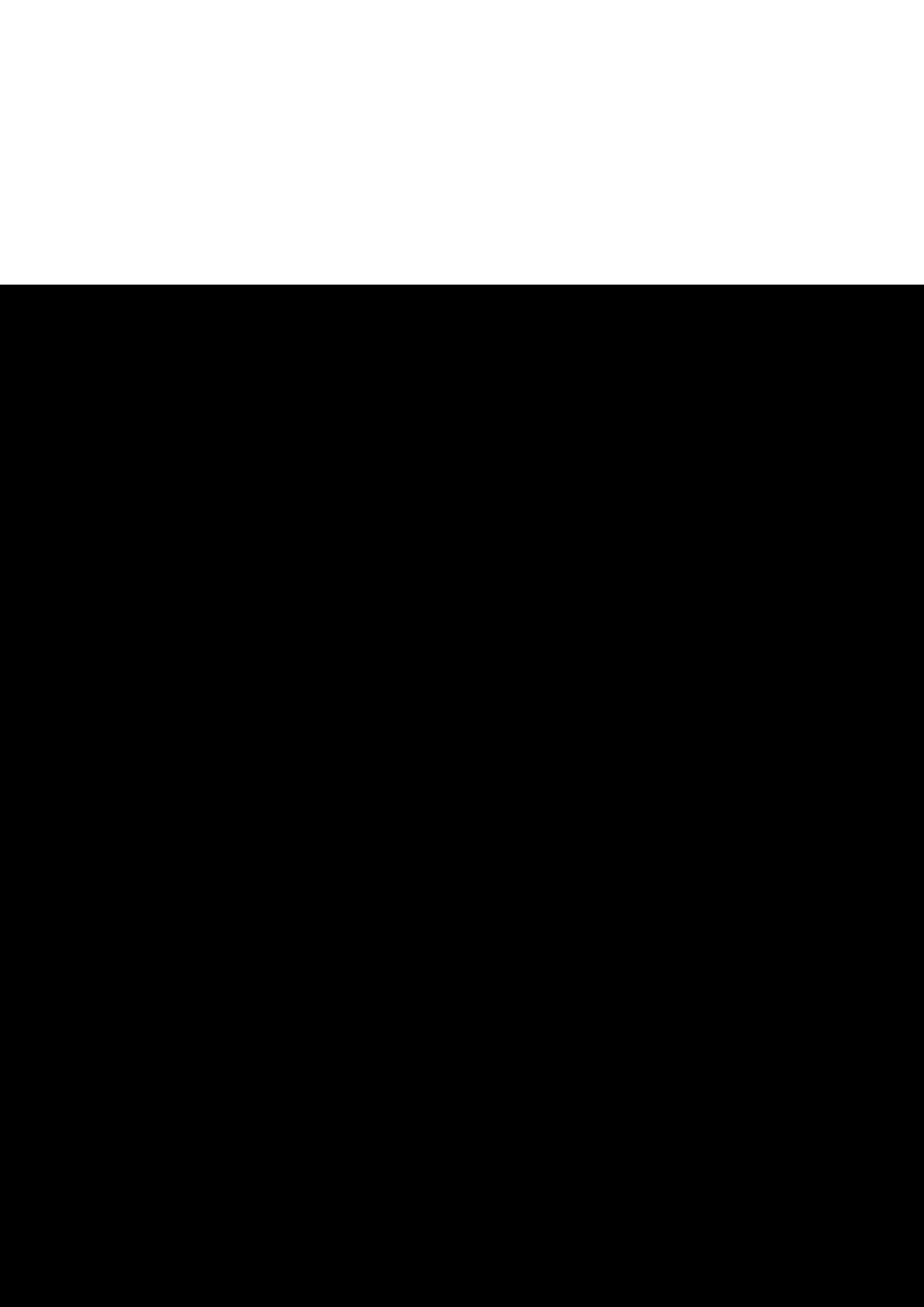




NEW PRODUCTS 2024



# RCF Sound Culture

## AT RCF WE CARE ABOUT YOUR SOUND

For 75 years, RCF has pushed the boundaries of audio innovation. Founded in 1949 by a group of passionate engineers, RCF's heritage is rooted in a relentless pursuit of superior sound quality and technological advancement.

RCF's fully integrated approach leads the way in the professional audio industry today. With R&D, manufacturing, and distribution all under one roof in Reggio Emilia, Italy, RCF can rapidly turn ideas into market-ready solutions. This vertical integration model gives an unparalleled competitive edge in quality, reliability, and value.

## NEW PRODUCTS 2024

### INSTALLED SOUND

<b>X SERIES</b>	page	4
<b>S 29 &amp; S 19</b>	page	6
<b>PMR 60T</b>	page	8
<b>CMR-S 60T</b>	page	10

### LIVE SOUND

<b>SUB AX SERIES</b>	page	12
----------------------	------	----

### PRO SOUND

<b>NXL 14-A</b>	page	16
<b>SUB 9029-AS &amp; SUB 9019-AS</b>	page	18

### SOUND SYSTEM SOLUTION

<b>RDNet 5</b>	page	20
----------------	------	----

# X SERIES

## WEATHERPROOF TWO-WAY SPEAKERS

Robust, high-quality audio solutions ideal for both indoor and outdoor settings. Crafted from high-density polyurethane and shielded by aluminum grilles with waterproof layers, X Series ensures durability and clear sound in any environment. With flexible mounting options and adjustable directivity, X speakers deliver exceptional performance across a wide range of demanding fixed applications.

## VERSATILITY FOR ANY APPLICATION

Focusing on heavy duty outdoor and indoor applications in large spaces, X Series speakers are capable of true, concert-level high performance in a compact and robust polyurethane enclosure, installed individually or coupled in array configurations. Featuring line source X 28L, and point source X 08 and X 12 speakers, all modules embed RCF Precision Transducers, horns, and waveguides for optimal coverage and clarity.

## FEATURES

- Up to 140 dB max SPL
- Up to 800 W RMS power handling
- Neodymium Transducers
- CMD constant directivity coverage
- High quality structural polyurethane cabinet
- Aluminum grille backed with protective acoustic fabrics
- IP55 protection grade
- 4 pole barrier strip terminals

## APPLICATIONS

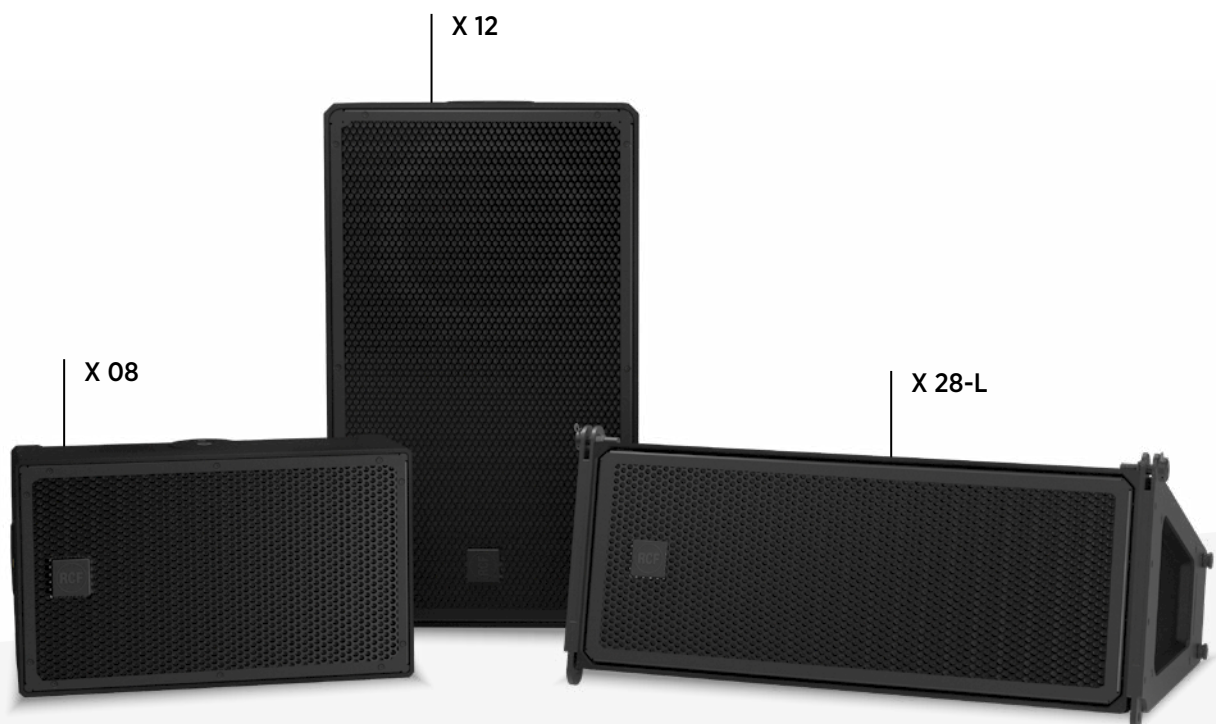
- Stadium and arenas
- Sports venues
- Swimming pools/SPA
- Leisure
- Seaside bars and nightclubs
- Outdoor dining

## ALL-WEATHER PERFORMANCE

The single-piece cabinet is equipped with multiple inserts and a corrosion-treated steel U-bracket. Connections to the amplifier are made through a watertight multi-pole connector. The front aluminum grille is powder coated with water-repellent backing material, front logo is rotatable. All X series speakers meet IP55 standard requirements (International Protection Rating), suitable for indoor and outdoor applications.

## POLYURETHANE: THE ULTIMATE IN DURABILITY

Rigid structural polyurethane is a durable and stiff plastic, ideal for outdoor loudspeakers due to its excellent weather, UV and corrosion resistance, impact and abrasion durability, and lightweight properties. Its sound-insulating and low-vibration qualities enhance audio performance. These attributes make it a robust and versatile choice for outdoor speakers, ensuring longevity and quality performance in various environmental conditions.





## SPECIFICATIONS

	<b>X 28L</b>	<b>X 12</b>	<b>X 08</b>
<b>Acoustical specifications</b>			
Frequency Response (-10dB)	50 Hz ÷ 20 kHz	55 Hz ÷ 20 kHz	70 Hz ÷ 20 kHz
Max SPL @ 1m	140 dB	129 dB	128 dB
Horizontal coverage angle	110°	100°	100°
Vertical coverage angle	20°	50°	100°
<b>Power section</b>			
Amplification	Full Range	Full Range	Full Range
Nominal Impedance	8 ohm	12 ohm	12 ohm
Power Handling	800 W RMS	500 W RMS	400 W RMS
Peak Power Handling	3200 W PEAK	2000 W PEAK	1600 W PEAK
Protections	Dynamic active mosfet	Dynamic Active Mosfet	Dynamic Active Mosfet
Crossover Frequencies	750 Hz	1200 Hz	2000 Hz
Recommended Amplifiers	XPS 16K, XPS 16KD, QPS 10K, QPS 6.0K, IPS 5.0K, IPS 2.5K	XPS 16K, XPS 16KD, QPS 10K, QPS 6.0K, IPS 5.0K, IPS 2.5K	XPS 16K, XPS 16KD, QPS 10K, QPS 6.0K, IPS 5.0K, IPS 2.5K, IPS 1.5K
<b>Transducers</b>			
Compression Driver	1 x 1.4" neo, 3.0" v.c	1 x 1.0" neo, 1.75" v.c	1 x 1.0" neo, 1.75" v.c
Woofers	2 x 8" neo, 2.5" v.c	12", 2.5" v.c	8" neo, 2.5" v.c
<b>Input/Output section</b>			
Input connectors	Screw Terminals	Screw Terminals	Screw Terminals
Output connectors	Screw Terminals	Screw Terminals	Screw Terminals
<b>Standard compliance</b>			
IP protection grade	IP 55	IP 55	IP 55
Safety agency	CE compliant	CE compliant	CE compliant
EN54-24 certified	Yes	Yes	Yes
<b>Physical specifications</b>			
Hardware	Array fittings	2 x M10 (top-bottom), 2 x M10 (sides)	2 x M10 (top-bottom), 2 x M10 (sides)
Color	Black RAL 9005, White RAL 9003	Black RAL 9005, White RAL 9003	Black RAL 9005, White RAL 9003
<b>Size Height</b>			
Height	290 mm / 11.42 inches	380 mm / 14.96 inches	260 mm / 10.24 inches
Width	658 mm / 25.91 inches	640 mm / 25.20 inches	436 mm / 17.17 inches
Depth	378 mm / 14.88 inches	380 mm / 14.96 inches	251 mm / 9.88 inches
<b>Part Number</b>			
<b>Black</b>	<b>13100107</b>	<b>13100106</b>	<b>13100105</b>

# S 29 & S 19

## HIGH POWER INSTALL SUBWOOFERS

Elegant design aesthetic, extreme power and RCF signature sound quality that allows to deliver a supreme audio experience in any fixed installation, from theaters and live clubs to big auditoriums, sports spaces and venues.

### ADVANCED TRANSDUCER TECHNOLOGY

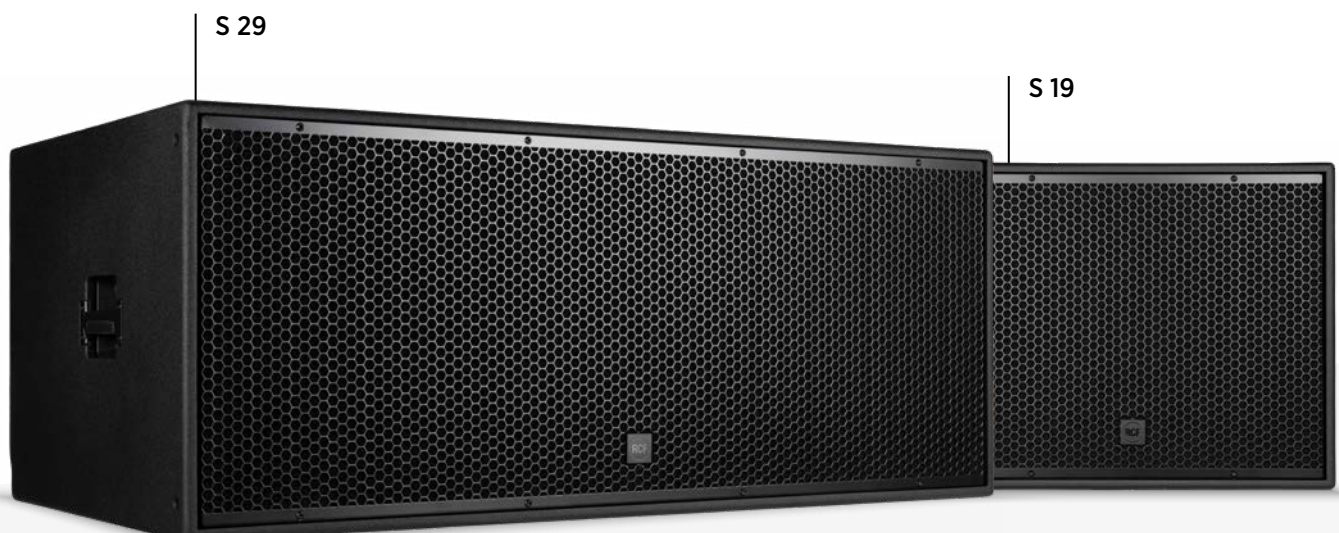
S subwoofers incorporate the latest transducer technology from our labs. The 19-inch cone size is the ideal balance between the traditional high-speed 18" and the slower 21" and inherits the best characteristics of the two sizes. Employing lightweight aluminum core coils, high-damping cellulose cone material, composite spiders and a 4-layer inside-outside voice coil, the ultra-long excursion moving mass (65mm/2.5" safe peak-to-peak) gains high power with fast acceleration. Despite their small and lightweight footprints, S 29 and S 19 produce powerful yet articulate bass, remaining true to even the most subtle low-frequency variations.

### OPTIMAL SOUND PERFORMANCE

S 29 and S 19 are high-power subwoofers, mainly suitable for RCF-installed sound systems. The bass-reflex design ensures an efficient acoustic response down to 25 Hz. The high-quality plywood cabinet is finished with a black, heavy-duty polyurea coating and protected by a powder-coated metal grille. The recessed input panel features two Speakon NL4 connectors, allowing a quick and safe connection. A M20 pole mount adaptor on top and handles on both sides are provided. Both models can be ground-stacked and are cardioid-arrayable for improved rear rejection.

### HIGH-POWER SUBWOOFERS

- Up to 3000 W power handling
- 143 dB max SPL
- 25 ÷ 200 Hz frequency range
- 19" high-power neodymium woofer with 4" v.c.
- High quality plywood cabinet
- Steel front grille with clothing
- M20 standard pole mount in top section of cabinet
- Speakon NL4 connectors





## SPECIFICATIONS

	<b>S 29</b>	<b>S 19</b>
<b>Acoustical specifications</b>		
Frequency Response (-10dB):	25 Hz ÷ 200 Hz	30 Hz ÷ 200 Hz
Max SPL @ 1m:	143 dB	139 dB
<b>Transducers</b>		
Woofer:	2 x 19" neo, 4.0" v.c	19" neo, 4.0" v.c
<b>Input/Output section</b>		
Input connectors:	Speakon® NL4	Speakon® NL4
Output connectors:	Speakon® NL4	Speakon® NL4
<b>Power section</b>		
Amplification:	Full Range	Full Range
Nominal Impedance:	4 ohm	8 ohm
Power Handling:	3000 W	1500 W
Peak Power Handling:	12000 W PEAK	6000 W PEAK
Recommended Amplifier:	6000 W	3000 W
<b>Standard compliance</b>		
Safety agency:	CE compliant	CE compliant
<b>Physical specifications</b>		
Cabinet/Case Material:	Plywood	Plywood
Hardware:		
Handles:	2 side	2 side
Pole mount/Cap:	Yes	Yes
Grille:	Steel with clothing	Steel with clothing
Color:	Black RAL 9005	Black RAL 9005
<b>Size</b>		
Height:	534 mm / 21.02 inches	534 mm / 21.02 inches
Width:	1300 mm / 51.18 inches	650 mm / 25.59 inches
Depth:	730 mm / 28.74 inches	730 mm / 28.74 inches
Weight:	90 kg / 198.42 lbs	46 kg / 101.41 lbs
<b>Part Number</b>	<b>13100097</b>	<b>13100096</b>

# PMR 60T

## TWO-WAY PENDANT MONITOR SPEAKER

RCF products designed for Business Music applications deliver optimal background performance and maintain consistent tonal quality across the series, even during high-powered foreground music playback. Their modern monochrome and discreet design seamlessly integrate into any setting.

PMR 60T is a two-way pendant monitor speaker, suitable for a wide range of applications. Thanks to its elegant and discreet design and refined finishes, it is suitable for all environmental and architectural conditions. Featuring a 6.5" woofer and 80 W RMS power, it is also equipped with a transformer for connection to constant voltage lines (70/100 V). The high quality of its transducers (arranged in a coaxial configuration) guarantees faithful and precise musical reproduction throughout the audio spectrum and allows to reach truly remarkable sound pressure levels for such compact products. The connection is simple and safe thanks to the removable four-pole screw terminals. The front grille is fixed by magnets and can therefore be easily removed to access the power rotary switch.

### MULTIPURPOSE SOUND

Music enhances engagement and hospitality in any social or shopping environment. Featuring a broad conical coverage angle of 130°, PMR speakers are equipped with two coaxially configured transducers housed in a bass-reflex cabinet, making them ideal for reproducing both speech and music.

### FEATURES

- 80W RMS power handling
- 114 dB max SPL
- 70 ÷ 20000 Hz frequency range
- 130° constant directivity conical coverage angle
- 6.5" high power woofer
- 1" neodymium dome tweeter
- Self extinguishing plastic body
- Steel magnetic front grille
- 4 pole EUROBLOCK connector (audio input and parallel link output)
- 5 m hanging cable included
- Available in full black or white







## COAXIAL DESIGN

Deliver rich lows and clear, intelligible highs with a coaxial two-way design — no DSP or EQ required. For even better sound, use DMA matrix amplifiers to enable RCF loudspeaker EQ and Bass Enhancer processing, which expands performance and response at any listening level. Ensure a consistent listening experience throughout the room with our CMD design, which matches the coverage of the woofer to the pattern of the tweeter

## DISCREET POWER

Our designers maintain a strong focus on simplicity without compromising usability. The smooth and subtle design perfectly blends with any architecture, without compromising on sound performance and ease of installation.

## SPECIFICATIONS

	<b>PMR 60T</b>
<b>Acoustical specifications</b>	
Frequency Response (-10dB)	70 Hz ÷ 20 kHz
Max SPL @ 1m	114 dB
Coverage angle	130°
System Sensitivity	89 dB
<b>Power section</b>	
Amplification	Full Range
Nominal Impedance	8 ohm
Power Handling	80 W RMS
Peak Power Handling	320 W PEAK
Crossover Frequencies	2500 Hz
Recommended Amplifiers	DMA 504, DMA 162, DMA 82, DMA 162P
<b>Transducers</b>	
Dome Tweeter	1.0" neo, 1.0" v.c
Woofer	6.5", 1.2" v.c
<b>Input/Output section</b>	
Input connectors	Euroblock
Output connectors	Euroblock
Constant Voltage Transformer	70/100 V
Power selection 1	80 W - 125 ohm
Power selection 2	40 W - 250 ohm
Power selection 3	20 W - 500 ohm
Power selection 4	10 W - 1000 ohm
Power selection 5	5 W - 2000 ohm
<b>Standard compliance</b>	
Safety agency	CE compliant
<b>Physical specifications</b>	
Color	Black RAL 9005, White RAL 9003
<b>Size Height</b>	
Height	236 mm / 9.29 inches
Diameter 300 mm / 11.81 inches	146 mm / 5.75 inches
Weight 5.1 kg / 11.24 lbs	55 mm / 2.17 inches
<b>Part Number</b>	
<b>Black</b>	<b>13100100</b>
<b>White</b>	<b>13100098</b>

# CMR-S 60T

RCF subwoofers are the first choice of many sound engineers, due to their very high SPL levels at very low frequencies, smaller dimensions compared to the competitors, and impressive size/weight to SPL output ratio. Your audience will enjoy an engaging immersive musical experience.

CMR-S 60T is a ceiling subwoofer, suitable for a wide range of applications. Thanks to its elegant and discreet design and refined finishes, it is suitable for all environmental and architectural conditions. The high quality of its transducer guarantees faithful and precise low frequencies reproduction and allows to reach truly remarkable sound pressure levels for such compact product.

## UNCOMPROMISED PERFORMANCE

Quality components and careful acoustic design make the CMR Series a perfect choice for demanding applications. Designed for bars and restaurants, leisure hospitality, recreational facilities, theme parks, shopping malls, and corporate spaces.

## FEATURES

- 80 W RMS power handling
- 109 dB max SPL
- 45 ÷ 250 Hz frequency range
- 180° coverage angle
- 6.5" high power woofer, 1.5" v.c.
- Self extinguishing plastic body and metal backcan
- Steel magnetic front grille
- 4 pole EUROBLOCK connector (audio input and parallel link output)
- 5 different power levels selectable





## SPECIFICATIONS

	<b>CMR-S 60T</b>
<b>Acoustical specifications</b>	
Frequency Response (-10dB)	45 Hz ÷ 250 kHz
Max SPL @ 1m	109 dB
Coverage angle	180°
System Sensitivity	89 dB
<b>Power section</b>	
Amplification	Full Range
Nominal Impedance	8 ohm
Power Handling	80 W RMS
Peak Power Handling	320 W PEAK
Recommended Amplifiers	DMA 504, DMA 162, DMA 82, DMA 162P
<b>Transducers</b>	
Woofers	6.5", 1.2" v.c
<b>Input/Output section</b>	
Input connectors	Euroblock
Output connectors	Euroblock
Constant Voltage Transformer	70/100 V
Power selection 1	80 W - 125 ohm
Power selection 2	40 W - 250 ohm
Power selection 3	20 W - 500 ohm
Power selection 4	10 W - 1000 ohm
Power selection 5	5 W - 2000 ohm
<b>Standard compliance</b>	
Safety agency	CE compliant
<b>Physical specifications</b>	
Hardware	Steel backcan
Color	White RAL 9003
<b>Size Height</b>	
Depth	202 mm / 7.95 inches
Recessed Depth	193 mm / 7.6 inches
Diameter	300 mm / 11.81 inches
Cut out diameter	260 mm / 10.24 inches
Weight	4.5 kg / 9.92 lbs
<b>Part Number</b>	<b>13100112</b>

## ACCESSORIES

### **GRILLE KIT 4X CMR B** | 13360492

Set of 4 black grilles for CMR 60T and CMR 50T ceiling speakers.

### **MUD RING 4X CMR** | 13360490

Set of 4 mud ring accessories for CMR 60T and CMR 50T installation in new constructions ceilings.

### **TILE BRIDGE 4X CMR** | 13360489

Set of 4 tile bridge accessories for CMR 60T and CMR 50T installation in standard false ceiling structures.

# SUB AX SERIES

## ADVANCED SUBWOOFERS WITH CROSSOVER PRESETS FOR RCF SPEAKERS

SUBs 15-AX and SUB 18-AX are portable 15" and 18" high-power active subwoofers for live sound applications with internal presets and fully featured processing, a color touch panel, and remote control via Bluetooth®. Latest-generation transducers with powerful Class-D amplifiers deliver sound pressure levels up to 133 dB and 135 dB with exceptional clarity and headroom.

### REMARKABLE VERSATILITY

SUB AX is the ideal complement for 10", 12" or 15" woofer-size loudspeakers; it centralizes speaker management inside the subwoofer, providing dual crossovers, 8-band EQs, routing, delays, cardioid configurations, and recallable crossover presets. The rugged all-wood cabinet with scratch-resistant polyurea coating makes it durable, easy to carry and install securely.

### YOUR SUB AS YOUR HUB

With internal ready-to-use crossover presets for RCF speakers, your sound system is perfectly aligned and ready for the show in a few steps. Simply connect your satellite speakers to the SUB AX, select the crossover preset on the menu, and you are ready to play. The SUB AX Series subwoofers have TRS or XLR combo inputs, so you can connect them to a variety of sources.

- **DIGITAL CROSSOVER**  
Presets for RCF speakers (ART 9, ART 7, HD, NX, NXL)  
4 Editable Presets + 4 from the App  
Extended FIRPHASE with Crossover Phase Alignment
- **FULLY FEATURED DSP FOR YOUR SYSTEM**  
Eight Recallable Snapshots  
Fullrange Parametric 8 Band EQ  
Up to 45 meters delay
- **LARGE TOUCH DISPLAY**  
2.4-inch Color Touch Panel  
Rotary Push Encoder  
Swipe Gesture for Fast Navigation
- **PRECISION TUNING**  
Top/Sub alignment (meters/feet/ms)  
High Pass Filter (OFF/35Hz/45Hz)  
Cardioid Function and L/R Balance for 2.1 systems



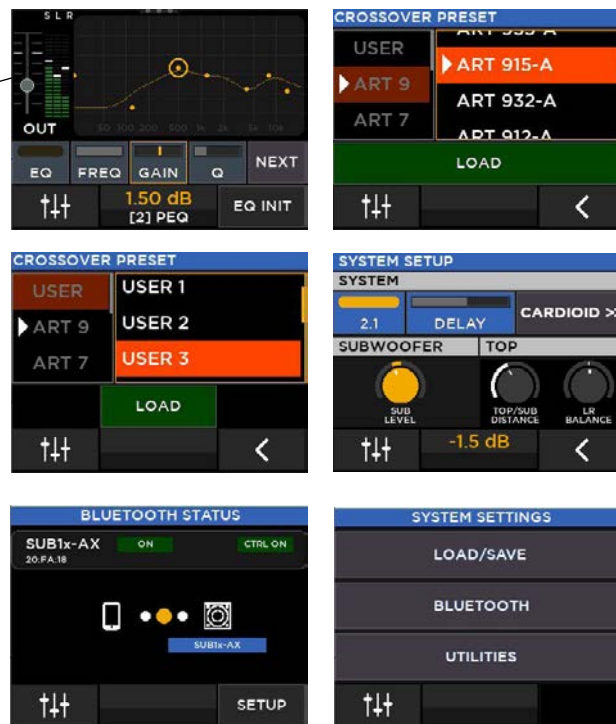


## READY-TO-USE CROSSOVER PRESETS

With internal ready-to-use crossover presets for RCF speakers, your sound system is perfectly aligned and ready for the show in a few steps. Simply connect your satellite speakers to the SUB AX, select the crossover preset on the menu, and you are ready to play. The SUB AX Series subwoofers have TRS or XLR combo inputs, so you can connect them to a variety of sources.

## COLOR TOUCH SCREEN

The SUB AX Series subwoofers have a large 2.4-inch color touch panel that enables full control of all DSP features. The panel also features a push encoder and swipe gesture for fast navigation. A flexible crossover section offers several presets for an optimal match with other RCF speakers; an advanced system section, with an 8-band equalizer and a delay up to 45 m, allow full system control, individually or paired with another subwoofer. Both 2.1 and 1.1 configurations are possible.



SUB AX Series subwoofers are built like a tank, with powerCON® TRUE1 TOP mains connectors, so you can be sure that they will stand up to the rigors of touring

# SUB AX SERIES

RCF subwoofers are the first choice of many sound engineers, thanks to the very high SPL levels at very low frequencies, small dimensions compared to the competitors, self-powered design, internal delay control, cardioid configuration options and impressive size/weight to SPL output ratio. Your crowd will be able to live an engaging immersive experience.



## LIVEREMOTE CONTROL APP

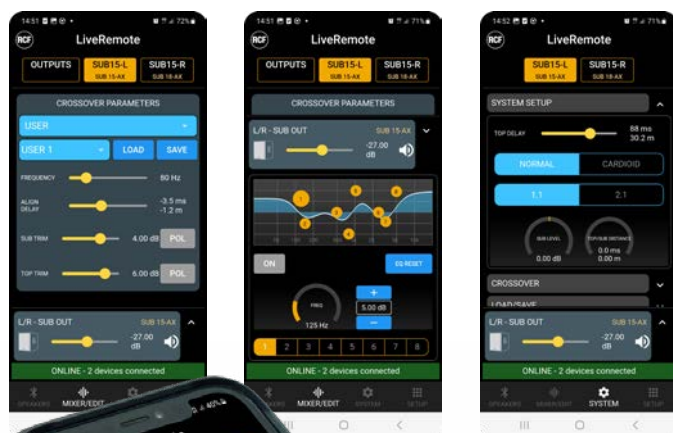
Whether you're a musician, DJ, or pro sound engineer, RCF LiveRemote App extends its reach: the same app is available for both ART 9 AX and SUB AX families. On the subs, crossover preset selection, system EQ and delay adjustments and crossover individual settings are quickly accessible; furthermore, two subwoofer units can be paired for 2.2 operation. Available for Android and iOS phones and tablets.

## A LIVE EXPERIENCE IN YOUR POCKET

With the RCF LiveRemote app, you can control up to 8 AX devices via Bluetooth® simultaneously from your smartphone or tablet. The app makes it easy to adjust internal routing, save and recall presets. You can also use the app to control your entire sound system, with advanced functions and a fully featured 8-band EQ. The app is available for Android and iOS phones and tablets.

## ACTIVE BLUETOOTH® SUBWOOFERS

- 2200 Watt Class-D Amplifier
- Up to 135 dB MAX SPL
- Digital Crossover w/ Speaker Presets
- Bass Motion Control woofer excursion management
- Multi-ply hardwood polyurea coated
- LiveRemote App for remote control via Bluetooth
- Dual XLR/TRS combo Input + Link; Dual XLR Xover Out
- Powercon True1 Top Sealed AC Connector
- Available in full black or white





## SPECIFICATIONS

	SUB 18-AX	SUB 15-AX
<b>Acoustical specifications</b>		
Frequency Response:	35 Hz ÷ 120 Hz	35 Hz ÷ 120 Hz
Max SPL @ 1m:	135 dB	133 dB
<b>Transducers</b>		
Woofers:	18", 4.0" v.c.	15", 3.0" v.c.
<b>Input/Output section</b>		
Input signal:	bal/unbal	bal/unbal
Input connectors:	Combo XLR/Jack	Combo XLR/Jack
Output connectors:	XLR	XLR
Input sensitivity:	-2 dBu/+4 dBu	-2 dBu/+4 dBu
<b>Processor section</b>		
Crossover Frequencies:	Digital Crossover	Digital Crossover
Protections:	Thermal	Thermal
Limiter:	Soft Limiter	Soft Limiter
Controls:	Encoder for Volume control and data entry. Touch Screen for parameter management and monitor.	Encoder for Volume control and data entry. Touch Screen for parameter management and monitor.
<b>Power section</b>		
Total Power:	2200 W Peak	2200 W Peak
Low frequencies:	2200 W Peak	2200 W Peak
Cooling:	Convection	Convection
Connections:	Powercon TRUE1 TOP IN/OUT	Powercon TRUE1 TOP IN/OUT
<b>RCF Technology</b>		
BASS MOTION CONTROL	Yes	Yes
<b>Standard compliance</b>		
Safety agency:	CE Compliant	CE Compliant
<b>Physical specifications</b>		
Cabinet/Case Material:	Plywood	Plywood
Handles:	One handle per side	One handle per side
Pole mount/Cap:	Yes	Yes
Grille:	Steel with clothing	Steel with clothing
Color:	Black RAL 9005, White RAL 9003	Black RAL 9005, White RAL 9003
<b>Size</b>		
Height:	693 mm / 27.28 inches	590 mm / 23.23 inches
Width:	505 mm / 19.88 inches	420 mm / 16.54 inches
Depth:	685 mm / 26.97 inches	590 mm / 23.23 inches
Weight:	37.6 kg / 82.89 lbs	26 kg / 57.32 lbs
<b>Part Number</b>		
220-240 V Black	13000836	13000835
100-120 V Black	13000834	13000832
220-240 V White	13000880	13000878
100-120 V White	13000879	13000877

## ACCESSORIES

<b>PM-KIT M20</b>	13360067
Adjustable pole for subwoofer.	
<b>AC PRO-PM</b>	13360110
Steel speaker pole mount with telescopic rod, tube diameter 35mm. Height adjustment using a non-scratching locking screw and safety pin. Moveable plastic splints separate the speaker from the stand creating a vibration-free connection. Easy to use ring lock.	
<b>WH PRO 4X</b>	13360238
Kit no 4 swivel castor, 100mm / 4" Ø wheel with roller bearings	
<b>CVR 003</b>	13360530
Padded Cover for SUB 18-AX.	
<b>CVR 004</b>	13360529
Padded Cover for SUB 15-AX.	

# NXL 14-A

## COMPACT POINT SOURCE ACTIVE SPEAKER

NXL active speaker systems are specifically designed for rental companies, professional DJs, and musicians but also intended for permanent installation. Their sleek and innovative design commands an incredible size-to-power ratio, featuring powerful amplifiers, full onboard DSP, and a complete set of rigging accessories.

### LINE ARRAY PERFORMANCE AND COVERAGE

Small in size but mighty in sound, the new NXL 14-A is the smallest speaker of the NXL Active Speaker Series, featuring two 6" woofers, a 1.75" PKX driver mounted on a rotatable TRW waveguide powered by a 2100W amplifier. Available in black or white color, this versatile speaker can pack serious power in a very compact cabinet. Perfect for portable compact systems with a SUB Series subwoofer, ideal in immersive applications or as an unobtrusive fill speaker.

### ENGAGE YOUR AUDIENCE

Based on RCF precision transducers and wooden cabinets, the NXL Series is the RCF's most flexible active speaker system when the need for deploying high-power and pristine sound for live events is required. With its streamlined design and small footprint, the NXL Series provides a powerful sound system when the space for speakers is limited.

### PROFESSIONAL ACTIVE COLUMN SPEAKERS

- 128 dB max SPL
- 2100W Class-D Bi-Amplification
- 70-20000 Hz linear frequency range
- 1.75" PKX Compression Driver
- 2 x 6" High Power Woofers
- Rotatable 100° x 70° TRW Waveguide
- FiRPHASE and Bass Motion Control
- Available in full black or white







## ALL IN ONE SOLUTION

Designed as the ideal sound system for the day-to-day live event, the NXL Series packs a variety of features for professional users. With the best size to power ratio in its class, advanced DSP, and equipped with multiple rigging points, the NXL Series is a solid and reliable choice. RCF products represent the 75-year commitment to excellence in manufacturing, precise and careful assembly, and extensive quality control procedures

## SUPERIOR DIRECTIVITY

Symmetrically aligned transducers ensure coherent wavefront projection and smooth response, providing consistent directional control. This true point source is ideal for main satellite, frontfill, or immersive applications.



## SPECIFICATIONS

	<b>NXL 14-A</b>
<b>Acoustical specifications</b>	
Frequency Response:	70 Hz ÷ 20 kHz
Max SPL @ 1m:	128 dB
Horizontal coverage angle	100°
Vertical coverage angle:	70°
<b>Transducers</b>	
Compression Driver:	1 x 1.0" neo, 1.75" v.c
Woofers:	2 x 6.0" neo, 2.0" v.c
<b>Input/Output section</b>	
Input signal:	bal/unbal
Input connectors:	Combo XLR/Jack
Output connectors:	XLR
Input sensitivity:	-2 dBu/+4 dBu
<b>Processor section</b>	
Crossover Frequencies:	1200 Hz
Protections:	Excurs.
Limiter:	Fast Limiter
Controls:	Bypass, Linear/High Pass, Volume, RDnet on board
RDNet	Yes
<b>Power section</b>	
Total Power:	2100 W Peak
High frequencies:	700 W Peak
Low frequencies:	1400 W Peak
Cooling:	Convection
Connections:	Powercon TRUE1 TOP IN/OUT
<b>Standard compliance</b>	
Safety agency:	CE compliant
<b>Physical specifications</b>	
Hardware:	2x M10 TOP AND BOTTOM 2X PIN D.10
Handles:	2 TOP AND BOTTOM
Color:	Black RAL 9005, White RAL 9003
<b>Size</b>	
Height:	567 mm / 22.32 inches
Width:	197 mm / 7.76 inches
Depth:	270 mm / 10.63 inches
<b>Part Number</b>	
<b>220-240 V Black</b>	<b>13000888</b>
<b>100-120 V Black</b>	<b>13000892</b>
<b>220-240 V White</b>	<b>13000891</b>
<b>100-120 V White</b>	<b>13000893</b>

# SUB 9029-AS & SUB 9019-AS

## HIGH-POWER ACTIVE SUBWOOFERS

Articulate bass with a compact, tour-ready design, enhanced by advanced wireless configuration and RDNet networked management, designed for rigorous touring. Ideal for audio professionals who demand the very best.

### UNLOCK YOUR SYSTEM'S TRUE POTENTIAL

The key to optimizing your sound system is the precise match between your subs and tops. This not only elevates sound quality but also enhances bass response, giving your audience both the beat they can hear and the vibe they can feel. With internal factory-tuned crossover presets for RCF speakers, your sound system is show-ready in a few easy steps. Simply connect your satellite speakers to the SUB 9000-AS Series, select your configuration and you are ready to go. FIRPHASE linear phase is extended to match the subwoofer phase down to the lowest frequencies.

### RDNET SYSTEM CONTROL SOFTWARE

RDNet is the RCF management software suite for Sound System Engineers. A robust management network for RCF devices, a line-array design tool, a monitoring platform, and a complete audio analyzer in one package. RDNet provides intuitive management of every connected device/object on the network. Network users can control all DSP settings inside any compatible device, including advanced subwoofer configurations, from a single object to groups of objects.

### TOUR GRADE SOLUTION

Designed for rigorous touring, SUB 9000-AS subwoofers feature tour-ready, weatherproof plywood construction with a durable polyurea finish. The included magnetic rain cover protects the connection panel from rain and dust, while rugged powerCON TRUE1 TOP AC connectors ensure reliable power delivery in any environmental condition. Subs are stackable and lightweight, have ergonomic handles with rubber grips, and are designed for easy set-up and tear-down. M20 pole mounts on the top and side of the cabinet offer flexible top speaker placement. Connections for a detachable front cart are included, enabling easy transport on wheels (cart sold separately).

### ADVANCED TRANSDUCER TECHNOLOGY

SUB 9000-AS subwoofers incorporate the latest transducer technology from our labs. The 19-inch cone size is the ideal balance between the traditional high-speed 18" and the slower 21" and inherits the best characteristics of the two sizes. Employing lightweight aluminum core coils, high-damping cellulose cone material, composite spiders and a 4-layer inside-outside voice coil, the ultra-long excursion moving mass gains high power with fast acceleration. Despite their small and lightweight footprints, SUB 9000-AS subwoofers produce powerful yet articulate bass, remaining true to even the most subtle low-frequency variations.

### FEATURES

- Up to 142 dB Max SPL
- 8000W Class-D Amplification
- I/O Panel Rain Cover Included
- RDNet Networked Control
- BMC, EQ, DLY, Cardioid
- Crossover Presets for RCF Speakers w/ FIRPHASE
- 19" Precision Transducers
- powerCON TRUE1 TOP AC Connector



## SPECIFICATIONS

	<b>SUB 9029-AS</b>	<b>SUB 9019-AS</b>
<b>Acoustical specifications</b>		
Frequency Response:	25 Hz ÷ 200 Hz	30 Hz ÷ 200 Hz
Max SPL @ 1m:	142 dB	138 dB
<b>Transducers</b>		
Woofers:	2 x 19" neo, 4.0" v.c	19" neo, 4.0" v.c
<b>Input/Output section</b>		
Input signal:	bal/unbal	bal/unbal
Input connectors:	XLR	XLR
Output connectors:	XLR	XLR
Input sensitivity:	-2 dBu/+4 dBu	-2 dBu/+4 dBu
<b>Processor section</b>		
Protections:	Thermal	Thermal
Limiter:	Soft Limiter	Soft Limiter
Controls:	MUTE, VOL, PRESETS	MUTE, VOL, PRESETS
RDNet:	Yes	Yes
<b>Power section</b>		
Total Power:	8000 W Peak	4000 W Peak
Cooling:	Convection/Forced	Convection/Forced
Connections:	Powercon TRUE1 TOP IN/OUT	Powercon TRUE1 TOP IN/OUT
<b>Standard compliance</b>		
Safety agency:	CE compliant	CE compliant
<b>Physical specifications</b>		
Hardware:	2 x M20 pole mount accessories	2 x M20 pole mount accessories
Handles:	3 handle per side	1 handle per side
Pole mount/Cap:	Yes	Yes
Color:	Black RAL 9005	Black RAL 9005
<b>Size</b>		
Height:	533 mm / 20.98 inches	533 mm / 21.77 inches
Width:	1310 mm / 51.57 inches	759.5 mm / 29.9 inches
Depth:	785 mm / 30.91 inches	713 mm / 28.07 inches
Weight:	93 kg / 205.03 lbs	53.4 kg / 117.73 lbs
<b>Part Number</b>		
<b>100-120 V</b>	<b>13000907</b>	<b>13000908</b>
<b>220-240 V</b>	<b>13000889</b>	<b>13000890</b>

## ACCESSORIES

<b>KRT-WH 007</b>	13360655
Detachable front wheel board for the transportation of SUB 9029-AS	
<b>CVR 016</b>	13360656
Protection Cover for SUB 9029-AS	
<b>KRT-WH 008</b>	13360657
Detachable front wheel board for the transportation of SUB 9019-AS	
<b>CVR 017</b>	13360658
Protection Cover for SUB 9019-AS	

# RDNet 5

## SOUND SYSTEM MANAGEMENT and CONTROL SOFTWARE

RDNet is a powerful management network and control platform for small to arena-sized sound systems and large-scale installations.



RDNet is an advanced platform for integrated monitoring and control of sound systems - from small live and installed setups to massive arena systems. Based on a robust networked architecture, RDNet combines system control, line array design, and comprehensive audio measurements into a single powerful software package. Engineers and technicians can

intuitively manage every device on the network, from individual components to multiple groups. The platform provides full DSP control of compatible devices, with flexible configuration tools for perfectly tuning the system response at maximum speed. Users have real-time access and oversight of all key settings from a centralized interface.

## THE TOOLBOX FOR SYSTEM DESIGN AND OPTIMIZATION

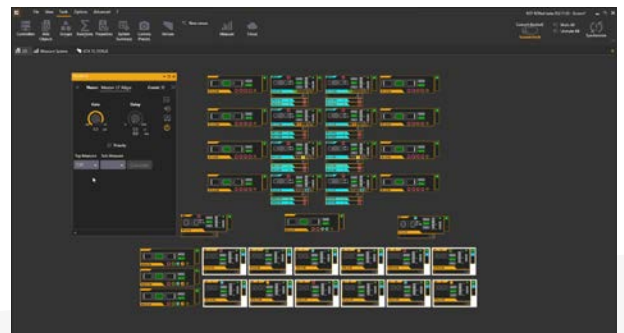
RDNet displays all audio devices connected to the network as objects on the main window. The real-time monitoring features a multitude of parameters such as fan speed, temperature, the inclination of a single speaker, VU Meters, peak levels, and more. The operator has complete control of time delay and equalization of every speaker, individually or grouped. With its built-in DSP, each device is an active part of the system, able to store presets, receive commands, and continuously send status information. Comprehensive monitoring is standard in RDNet: VU metering, clip indicator, limiter intervention, device inclination, communication issues—down to the status of a single component or a transducer—and much more.

## RDNET MEASURES

RDNet Measure is a powerful 4-input Dual-Channel FFT Audio Analyzer able to measure Magnitude, Phase, RTA, Coherence, and Impulse response. Functions included spans from a delay finder, a multiple signal generator, and an integrated SPL meter/logger with calibration tools. There's no need for external software to get the job done.

## FEATURES

- Array and Zones Grouping for self- and externally-powered systems
- Real-time Discovery and Complete Monitoring
- Complete Real-Time FFT Analyzer with EQ integration and Auto-Alignment
- Adjust Hi-Pass, EQ, Gain, and Delay on individual components
- New IP-based RDNet-OE architecture
- Cloud Storage and Import full
- Shape Designer Array Calculator





## WHAT'S NEW IN VERSION 5

The latest release features a streamlined workflow for seamlessly grouping self- and externally-powered systems. Device discovery is optimized with quicker drag-and-drop functionality, making it easy to manage hybrid systems. For example, a configuration using both TT+ Audio and RCF HDL loudspeakers. The improved user interface includes an advanced EQ visualization with amplitude/phase response plot and real-time FFT analysis. The redesigned cloud infrastructure allows projects and measurements to be saved remotely and recalled from any location.

## NEW: AUTOMATIC ALIGNMENT

The time-saving [Automatic LF Alignment] and [Fill/Delay Align] functions integrated with RDNet Measure allow for quickly aligning big systems directly from measurements.

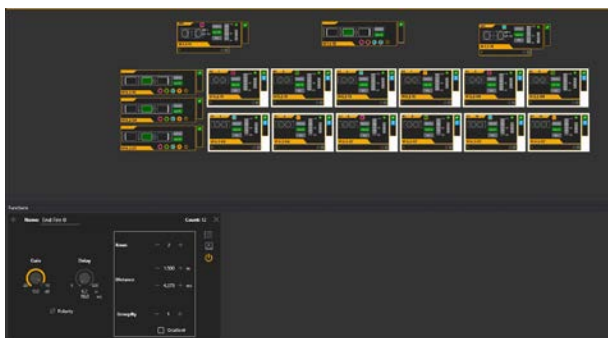
The process is simple: after saving RDNet Impulse Response Measurements by group of speakers (Line Array, Subwoofer group, Cluster or Fill Speakers), the [Automatic LF Alignment] function automatically calculates and applies the best phase alignment of the sound system with the subwoofer group, while the [Fill/Delay Align] provides the best temporal alignment between two groups of speakers.

## GET THE MOST OUT OF YOUR SYSTEM

RDNet gives the ability to control devices in Groups for easy supervision. Arrays customizable Group properties are Zones, Air Compensation, Cluster Size, FIRPHASE Gain. When assigning Group Array objects in Zones: every Zone has its color for quick reference of set parameters. An incremental control shapes the Air Absorption Compensation, which can be very useful with changes in humidity or temperature (e.g., soundcheck on a sunny day, concert on a humid night). The line array's low-mid shaping is automatically calculated on the Cluster size to obtain the perfect linear frequency response from the entire system.

## LIVE SOUND AND INSTALL AUDIO APPLICATIONS

RDNet provides a comprehensive management system for both live and installed environments. This networked platform facilitates control and allows for the efficient monitoring, routing, and tuning of all RDNet-compatible devices



# TECHNOLOGIES



## **FIRPHASE TECHNOLOGY**

RCF speakers are designed using a proprietary and advanced FIR filtering technology, conceived to deliver transparent sound, absolute clarity and perfect stereo images to the listener. The special FIRPHASE filters allow for coherent distribution of sound for all listeners without phase distortions, ensuring minimum latencies in the system.



## **BASS MOTION CONTROL**

When searching for an extended bass with enhanced performance, RCF engineers found a way to remove the high-pass filter, replacing it with a forward-thinking approach. Introducing BMC (Bass Motion Control), the newly advanced woofer excursion management feature. ART 9 with BMC can handle the lowest audible frequencies without affecting the woofer stability, with extended linearity and better sound integrity.



## **XBOOST Low Frequencies Enhancer**

XBoost unlocks the profound low frequencies concealed within ART speakers. With a simple activation from the speaker's rear panel, immerse yourself in a rich tapestry of bass that pounds with exceptional clarity and control. Whether you're seeking subtle background music or an enriched sonic experience for your mix, XBoost delivers an astonishing perception of deepened bass, ensuring that every note retains its pristine essence and keeping the woofer excursion under control.





[www.rcf.it](http://www.rcf.it)

HEADQUARTERS:

RCF S.p.A. Italy  
tel. +39 0522 274 411  
e-mail: [info@rcf.it](mailto:info@rcf.it)

RCF UK  
Int. +44 (0) 1702 800846  
e-mail: [info@rcfaudio.co.uk](mailto:info@rcfaudio.co.uk)

RCF France  
tel. +33 7 81 69 87 12  
e-mail: [france@rcf.it](mailto:france@rcf.it)

RCF Germany  
tel. +49 2203 925370  
e-mail: [sales@rcf.de](mailto:sales@rcf.de)

RCF Spain  
tel. +34 91 817 42 66  
e-mail: [info@rcfaudio.es](mailto:info@rcfaudio.es)

RCF Benelux  
tel. +49 (0) 2203 9253724  
e-mail: [benelux@rcf.it](mailto:benelux@rcf.it)

RCF USA Inc.  
tel. +1 732-9026100  
e-mail: [info@rcf-usa.com](mailto:info@rcf-usa.com)

